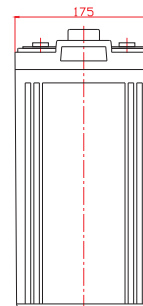
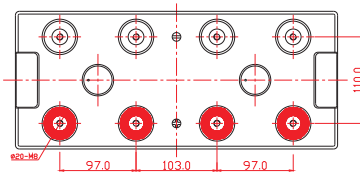
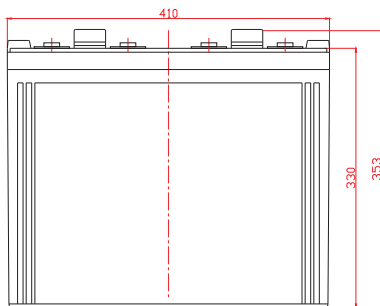


Power Battery PM2-800 is a general purpose 2v variant of our PM12V series, rated at 800Ah. It's built to the same high standards that distinguish all Power Battery products.

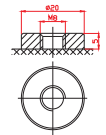
Power Battery PM2-800

Cells Per Unit	1
Voltage Per Unit	2
Capacity	800Ah@10hr-rate to 1.80V per cell @25°C
Weight	Approx. 50.0 kg
Max. Discharge Current	3200A (5 sec)
Internal Resistance	Approx. 0.6 mΩ
Operating Temperature Range	Discharge: -20°C~60°C. Charge: 0°C~50°C. Storage: -20°C~60°C.
Normal Operating Temperature Range	25°C ±5°C
Float Charging Voltage	2.27 to 2.3 VDC/unit Average at 25°C
Recommended Max Charging Current Limit	160 A
Equalization and Cycle Service	2.43 to 2.47 VDC/unit Average at 25°C
Self-Discharge	Typically stored for 6 months at 25°C. Self-discharge ratio less than 3% per month at 25°C. Please charge before use.
Terminal	Thread insert & Bolt (F10)

410(L)×175(W)×353(H) (mm)



F10 Terminal



Constant Current Discharge Characteristics A (25°C)

F.V/Time	15 min	30 min	1 hr	2 hr	3 hr	4 hr	5 hr	6 hr	8 hr	10 hr
1.60V	1086	801.0	515.5	306.4	228.2	181.9	153.2	128.7	103.9	86.82
1.65V	1033	769.1	493.2	295.3	218.7	175.6	146.8	125.6	99.23	85.32
1.70V	963.1	725.0	483.6	290.5	213.9	174.0	145.2	122.5	97.68	83.77
1.75V	855.0	652.5	445.3	274.5	202.7	164.4	138.9	116.3	94.57	82.22
1.80V	736.0	594.3	419.7	261.7	194.7	162.8	134.1	114.7	93.02	80.67
1.85V	622.4	535.0	387.8	247.4	185.1	150.0	127.7	108.5	88.37	75.22

Constant Power Discharge Characteristics W (25°C)

F.V/Time	15 min	30 min	1 hr	2 hr	3 hr	4 hr	5 hr	6 hr	8 hr	10 hr
1.60V	1902	1460	943.9	567.7	425.3	341.9	289.6	248.3	197.7	167.6
1.65V	1852	1452	940.6	559.5	417.0	336.8	286.3	245.1	196.0	166.0
1.70V	1749	1374	923.5	551.3	410.6	335.5	283.8	239.4	193.0	163.5
1.75V	1558	1238	850.7	521.9	395.9	318.7	271.8	227.6	186.9	160.8
1.80V	1349	1130	802.2	498.4	379.5	317.2	263.0	224.9	183.9	155.1
1.85V	1150	1019	741.5	471.8	361.5	293.8	251	213.1	174.7	149.4