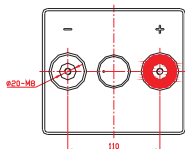
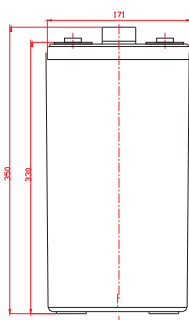


Power Battery PM2-300 is a general purpose 2v variant of our PM12V series, rated at 300Ah. It's built to the same high standards that distinguish all Power Battery products.

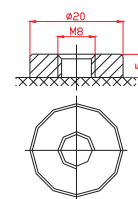
Power Battery PM2-300

Cells Per Unit	1
Voltage Per Unit	2
Capacity	300Ah@10hr-rate to 1.80V per cell @25°C
Weight	Approx 19.0 kg
Max. Discharge Current	1500A (5 sec)
Internal Resistance	Approx. 0.72 mΩ
Operating Temperature Range	Discharge: -20°C~60°C. Charge: 0°C~50°C. Storage: -20°C~60°C.
Normal Operating Temperature Range	25°C ±5°C
Float Charging Voltage	2.27 to 2.3 VDC/unit Average at 25°C
Recommended Max Charging Current Limit	60 A
Equalization and Cycle Service	2.43 to 2.47 VDC/unit Average at 25°C
Self-Discharge	Typically stored for 6 months at 25°C. Self-discharge ratio less than 3% per month at 25°C. Please charge before use.
Terminal	Thread insert & Bolt (F10)

171(L)×150(W)×366(H) (mm)



Terminal F10



Constant Current Discharge Characteristics A (25°C)

F.V/Time	15 min	30 min	1 hr	2 hr	3 hr	4 hr	5 hr	6 hr	8 hr	10 hr
1.60V	407.3	300.4	193.3	114.9	85.59	68.23	57.46	48.26	38.95	32.56
1.65V	387.3	288.4	184.9	110.7	81.99	65.84	55.06	47.09	37.21	32.00
1.70V	361.2	271.9	181.3	108.9	80.20	65.24	54.46	45.93	36.63	31.41
1.75V	320.6	244.7	167.0	102.9	76.01	61.65	52.07	43.61	35.47	30.83
1.80V	276.0	222.9	157.4	98.15	73.02	61.05	50.27	43.02	34.88	30.25
1.85V	233.4	200.6	145.4	92.77	69.43	56.26	47.88	40.70	33.14	28.21

Constant Power Discharge Characteristics W (25°C)

F.V/Time	15 min	30 min	1 hr	2 hr	3 hr	4 hr	5 hr	6 hr	8 hr	10 hr
1.60V	713.1	547.4	354.0	212.9	159.5	128.2	108.6	93.11	74.13	62.86
1.65V	694.4	544.5	352.7	209.8	156.4	126.3	107.4	91.92	73.50	62.27
1.70V	656.0	515.3	346.3	206.7	154.0	125.8	106.4	89.78	72.37	61.30
1.75V	584.3	464.4	319.0	195.7	148.5	119.5	101.94	85.36	70.09	60.32
1.80V	505.7	423.7	300.8	186.9	142.3	119.0	98.63	84.35	68.96	58.17
1.85V	431.3	382.0	278.1	176.9	135.6	110.2	94.12	79.91	65.53	56.01