

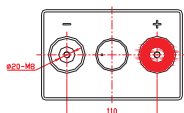
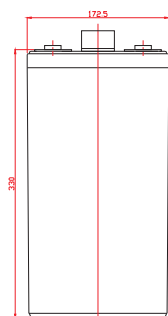
Power Battery PM2-200 is a general purpose 2v variant of our PM12V series, rated at 200Ah. It's built to the same high standards that distinguish all Power Battery products.



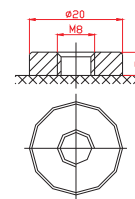
## Power Battery PM2-200

Cells Per Unit	1
Voltage Per Unit	2
Capacity	200Ah@10hr-rate to 1.80V per cell @25°C
Weight	Approx 14.0 kg
Max. Discharge Current	1000A (5 sec)
Internal Resistance	Approx. 0.8 mΩ
Operating Temperature Range	Discharge: -20°C~60°C. Charge: 0°C~50°C. Storage: -20°C~60°C.
Normal Operating Temperature Range	25°C ±5°C
Float Charging Voltage	2.27 to 2.3 VDC/unit Average at 25°C
Recommended Max Charging Current Limit	40 A
Equalization and Cycle Service	2.43 to 2.47 VDC/unit Average at 25°C
Self-Discharge	Typically stored for 6 months at 25°C. Self-discharge ratio less than 3% per month at 25°C. Please charge before use.
Terminal	Thread insert & Bolt (F10)

L:172.5 W:111 H:366 (mm)



Terminal F10



### Constant Current Discharge Characteristics A (25°C)

F.V/Time	15 min	30 min	1 hr	2 hr	3 hr	4 hr	5 hr	6 hr	8 hr	10 hr
1.60V	271.5	200.3	128.9	76.61	57.06	45.49	38.30	32.17	25.97	21.71
1.65V	258.2	192.3	123.3	73.82	54.66	43.89	36.71	31.40	24.81	21.33
1.70V	240.8	181.3	120.9	72.62	53.47	43.49	36.31	30.62	24.42	20.94
1.75V	213.8	163.1	111.3	68.63	50.67	41.10	34.71	29.07	23.64	20.56
1.80V	184.0	148.6	104.9	65.44	48.68	40.70	33.52	28.68	23.26	20.17
1.85V	155.6	133.8	96.96	61.85	46.28	37.51	31.92	27.13	22.09	18.80

### Constant Power Discharge Characteristics W (25°C)

F.V/Time	15 min	30 min	1 hr	2 hr	3 hr	4 hr	5 hr	6 hr	8 hr	10 hr
1.60V	475.4	365.0	236.0	141.9	106.3	85.48	72.39	62.07	49.42	41.91
1.65V	462.9	363.0	235.2	139.9	104.2	84.21	71.57	61.28	49.00	41.51
1.70V	437.3	343.6	230.9	137.8	102.7	83.88	70.94	59.85	48.25	40.86
1.75V	389.5	309.6	212.7	130.5	98.97	79.67	67.96	56.91	46.73	40.21
1.80V	337.2	282.5	200.5	124.6	94.88	79.30	65.75	56.23	45.97	38.78
1.85V	287.5	254.7	185.4	117.9	90.38	73.46	62.75	53.27	43.68	37.34