

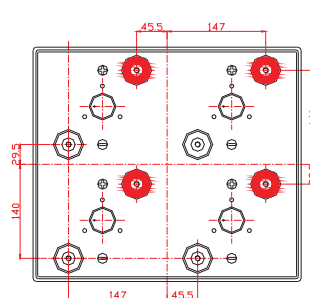
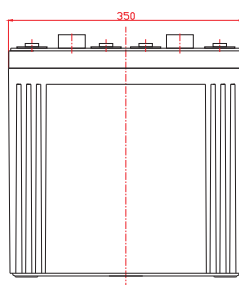
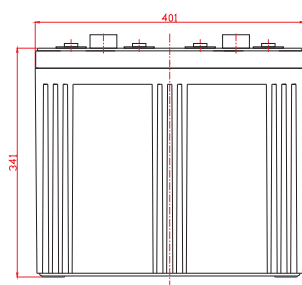
Power Battery PM2-1500 is a general purpose 2v variant of our PM12V series, rated at 1500Ah. It's built to the same high standards that distinguish all Power Battery products.



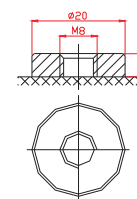
Power Battery PM2-1500

Cells Per Unit	1
Voltage Per Unit	2
Capacity	1500Ah@10hr-rate to 1.80V per cell @25°C
Weight	Approx. 96 kg
Max. Discharge Current	6000A (5 sec)
Internal Resistance	Approx. 0.5 mΩ
Operating Temperature Range	Discharge: -20°C~60°C. Charge: 0°C~50°C. Storage: -20°C~60°C.
Normal Operating Temperature Range	25°C ±5°C
Float Charging Voltage	2.27 to 2.3 VDC/unit Average at 25°C
Recommended Max Charging Current Limit	300 A
Equalization and Cycle Service	2.43 to 2.47 VDC/unit Average at 25°C
Self-Discharge	Typically stored for 6 months at 25°C. Self-discharge ratio less than 3% per month at 25°C. Please charge before use.
Terminal	Thread insert & Bolt (F10)

401(L)×350(W)×383(H) (mm)



Terminal F10



Constant Current Discharge Characteristics A (25°C)

F.V/Time	15 min	30 min	1 hr	2 hr	3 hr	4 hr	5 hr	6 hr	8 hr	10 hr
1.60V	2037	1502	966.6	574.6	427.9	341.1	287.3	241.3	194.8	162.8
1.65V	1937	1442	924.7	553.6	410.0	329.2	275.3	235.5	186.0	160.0
1.70V	1806	1359	906.7	544.6	401.0	326.2	272.3	229.7	183.1	157.1
1.75V	1603	1223	834.9	514.7	380.0	308.2	260.3	218.0	177.3	154.2
1.80V	1380	1114	787.0	490.8	365.1	305.2	251.4	215.1	174.4	151.3
1.85V	1167	1003	727.2	463.8	347.1	281.3	239.4	203.5	165.7	141.0

Constant Power Discharge Characteristics W (25°C)

F.V/Time	15 min	30 min	1 hr	2 hr	3 hr	4 hr	5 hr	6 hr	8 hr	10 hr
1.60V	3565	2737	1770	1064	797.5	641.1	542.9	465.5	370.6	314.3
1.65V	3472	2723	1764	1049	781.8	631.6	536.8	459.6	367.5	311.3
1.70V	3280	2577	1732	1034	769.9	629.1	532.0	448.9	361.8	306.5
1.75V	2922	2322	1595	978.5	742.3	597.5	509.7	426.8	350.4	301.6
1.80V	2529	2119	1504	934.5	711.6	594.8	493.1	421.7	344.8	290.8
1.85V	2156	1910	1390	884.6	677.9	550.9	470.6	399.5	327.6	280.0