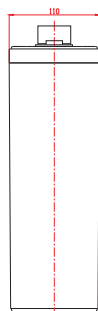
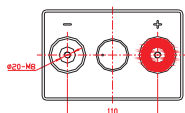
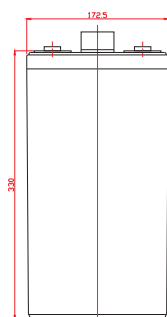


Power Battery PA2-250 is a general purpose 2v variant of our PA12V series, rated at 250Ah. It's built to the same high standards that distinguish all Power Battery products.

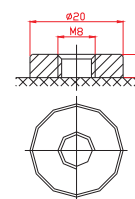
Power Battery PA2-250

Cells Per Unit	1
Voltage Per Unit	2
Capacity	250Ah@10hr-rate to 1.80V per cell @25°C
Weight	Approx 16.0 kg
Max. Discharge Current	1250A (5 sec)
Internal Resistance	Approx. 0.76 mΩ
Operating Temperature Range	Discharge: -20°C~60°C. Charge: 0°C~50°C. Storage: -20°C~60°C.
Normal Operating Temperature Range	25°C ±5°C
Float Charging Voltage	2.27 to 2.3 VDC/unit Average at 25°C
Recommended Max Charging Current Limit	50 A
Equalization and Cycle Service	2.43 to 2.47 VDC/unit Average at 25°C
Self-Discharge	Typically stored for 6 months at 25°C. Self-discharge ratio less than 3% per month at 25°C. Please charge before use.
Terminal	Thread insert & Bolt (F10)

172.5(L)×110(W)×366(H) (mm)



Terminal F10



Constant Current Discharge Characteristics A (25°C)

F.V/Time	15 min	30 min	1 hr	2 hr	3 hr	4 hr	5 hr	6 hr	8 hr	10 hr
1.60V	339.4	250.3	161.1	95.76	71.32	56.86	47.88	40.21	32.46	27.13
1.65V	322.8	240.4	154.1	92.27	68.33	54.86	45.89	39.24	31.01	26.66
1.70V	301.0	226.6	151.1	90.77	66.83	54.36	45.39	38.28	30.52	26.18
1.75V	267.2	203.9	139.2	85.79	63.34	51.37	43.39	36.34	29.55	25.69
1.80V	230.0	185.7	131.2	81.8	60.85	50.87	41.9	35.85	29.07	25.21
1.85V	194.5	167.2	121.2	77.31	57.86	46.88	39.9	33.92	27.62	23.51

Constant Power Discharge Characteristics W (25°C)

F.V/Time	15 min	30 min	1 hr	2 hr	3 hr	4 hr	5 hr	6 hr	8 hr	10 hr
1.60V	594.2	456.2	295.0	177.4	132.9	106.8	90.49	77.59	61.77	52.38
1.65V	578.7	453.8	294.0	174.8	130.3	105.3	89.46	76.60	61.25	51.89
1.70V	546.6	429.5	288.6	172.3	128.3	104.8	88.67	74.82	60.31	51.08
1.75V	486.9	387.0	265.8	163.1	123.7	99.59	84.95	71.13	58.41	50.27
1.80V	421.5	353.1	250.7	155.7	118.6	99.13	82.19	70.29	57.47	48.47
1.85V	359.4	318.4	231.7	147.4	113.0	91.82	78.44	66.59	54.61	46.67