

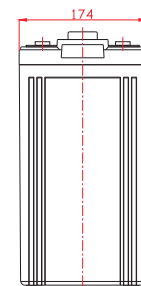
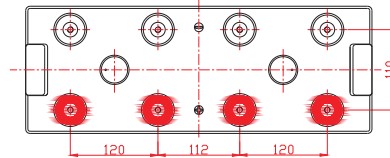
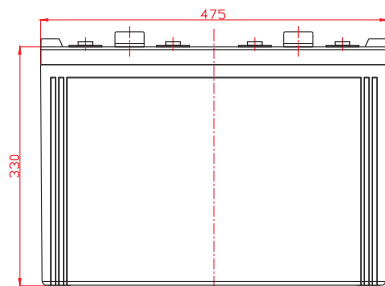
Power Battery PA2-1000 is a general purpose 2v variant of our PA12V series, rated at 1000Ah. It's built to the same high standards that distinguish all Power Battery products.



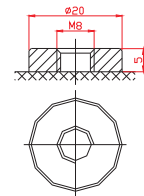
## Power Battery PA2-1000

Cells Per Unit	1
Voltage Per Unit	2
Capacity	1000Ah@10hr-rate to 1.80V per cell @25°C
Weight	Approx. 62.0 kg
Max. Discharge Current	4000A (5 sec)
Internal Resistance	Approx. 0.55 mΩ
Operating Temperature Range	Discharge: -20°C~60°C. Charge: 0°C~50°C. Storage: -20°C~60°C.
Normal Operating Temperature Range	25°C ±5°C
Float Charging Voltage	2.27 to 2.3 VDC/unit Average at 25°C
Recommended Max Charging Current Limit	200 A
Equalization and Cycle Service	2.43 to 2.47 VDC/unit Average at 25°C
Self-Discharge	Typically stored for 6 months at 25°C. Self-discharge ratio less than 3% per month at 25°C. Please charge before use.
Terminal	Thread insert & Bolt (F10)

475(L)×175(W)×368(H) (mm)



Terminal F10



### Constant Current Discharge Characteristics A (25°C)

F.V/Time	15 min	30 min	1 hr	2 hr	3 hr	4 hr	5 hr	6 hr	8 hr	10 hr
1.60V	1358	1001	644.4	383.0	285.3	227.4	191.5	160.9	129.8	108.5
1.65V	1291	961.4	616.5	369.1	273.3	219.5	183.5	157.0	124.0	106.7
1.70V	1204	906.3	604.5	363.1	267.3	217.5	181.5	153.1	122.1	104.7
1.75V	1069	815.6	556.6	343.1	253.4	205.5	173.6	145.4	118.2	102.8
1.80V	920.0	742.9	524.7	327.2	243.4	203.5	167.6	143.4	116.3	100.8
1.85V	778.1	668.8	484.8	309.2	231.4	187.5	159.6	135.7	110.5	94.02

### Constant Power Discharge Characteristics W (25°C)

F.V/Time	15 min	30 min	1 hr	2 hr	3 hr	4 hr	5 hr	6 hr	8 hr	10 hr
1.60V	2377	1825	1180	709.6	531.7	427.4	361.9	310.4	247.1	209.5
1.65V	2315	1815	1176	699.3	521.2	421.0	357.9	306.4	245.0	207.6
1.70V	2187	1718	1154	689.1	513.3	419.4	354.7	299.3	241.2	204.3
1.75V	1948	1548	1063	652.3	494.9	398.3	339.8	284.5	233.6	201.1
1.80V	1686	1412	1003	623.0	474.4	396.5	328.8	281.2	229.9	193.9
1.85V	1438	1273	926.8	589.7	451.9	367.3	313.7	266.4	218.4	186.7